



## The Modern Language Association of America

Begun in 1883 by a small group of scholars committed to the study and teaching of language and literature, the Modern Language Association is today one of the largest humanities organizations in the world, with members in more than a hundred countries, a bibliography that covers work in languages from Arabic to Urdu, and an annual convention that attracts participants from around the globe.

If professional growth, peer recognition, and supporting outstanding research are important to you, you should become an MLA member.

### 6 Reasons to Become an MLA Member

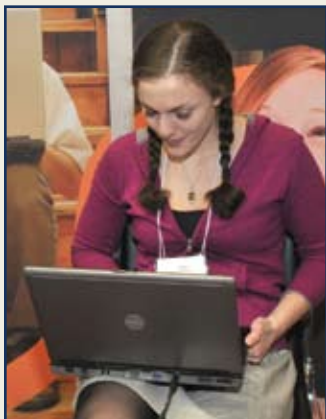
- 1 Enhance your professional growth by taking advantage of networking opportunities: MLA's divisions, discussion groups, and committees offer year-round connections to 30,000 members in 100 countries.
- 2 Help fund MLA's unique resources, like data on the job market, the report from the Ad Hoc Committee on Foreign Languages, work of the Task Force on Evaluating Scholarship for Tenure and Promotion, and statements on best practices and professional ethics.
- 3 Support the development of tools for teachers and students, such as the *MLA Handbook for Writers of Research Papers*, now available online ([www.mlahandbook.org](http://www.mlahandbook.org)) and in print.
- 4 Gain leadership in a wider humanities community.
- 5 Benefit from the representation of your interests to the media.
- 6 Help promote interest in the field. The association publishes the *MLA Guide to Doctoral Programs* and brochures promoting foreign language study (available to the public at [www.mla.org](http://www.mla.org)).

Become a member at [www.mla.org](http://www.mla.org)

# MLA Member Benefits

- Five issues of *PMLA*: four containing essays on literature and the November issue, which prints the program of the annual convention
- Four issues of the *MLA Newsletter* (available online and in print)
- A copy of *Profession*, an annual collection of articles on the field
- Reduced registration fees at the annual convention
- A 20% discount on more than 300 books and pamphlets published by the MLA
- Eligibility to vote for officers, members of the Executive Council, members of the Delegate Assembly, and members of division and discussion group executive committees
- Participation in MLA-sponsored group insurance plans
- Individual annual subscriptions to the ACLS Humanities E-Book

## MLA Members Also Have Exclusive Access to the Following Areas of the MLA Web Site:



- A regularly updated list of current members
- Priority convention registration
- The *MLA Newsletter* in PDF
- A searchable list of departmental administrators
- Direct access to the *Job Information List* and ability to save search information for members in ADE and ADFL member departments logged in to the MLA Web site

- Forthcoming Meetings and Professional Notes and Comments (formerly printed in *PMLA*)
- Forums for divisions and discussion groups
- The *MLA Directory of Periodicals*, a searchable database that provides submission requirements, editorial addresses, and subscription information for over 4,000 journals in the humanities



## MLA by the Numbers

- Over 300 members are elected to govern the association through its Executive Council, Delegate Assembly, and other governance committees.
- Over 675 members serve on the executive committees, divisions, and discussion groups that represent the scholarly and teaching interests of various constituencies within the profession and that help determine much of the program at the annual convention.
- Over 3,000 members give papers and readings each year at the convention.
- Hundreds of readers join the 40 members of the *PMLA* Editorial Board and Advisory Committee in reviewing essays submitted for publication.
- More than 120 specialists index articles and journals for the *MLA International Bibliography*.
- Over 70 members are involved in selecting the winners of the 17 prizes the MLA awards for outstanding scholarly books and articles on language and literature.



Photographs courtesy of Edward Savaria, Jr.

## MLA International Bibliography

This searchable database offers electronic access through academic libraries' Web sites to over two million literature, language, film, linguistics, and folklore citations dating from 1926 to the present.



The *MLA International Bibliography* annually adds over 70,000 international books, articles, and Web sites to its extensive listings.

In addition to full-text links from publishers such as *JSTOR*, *Project Muse*, and *ProQuest Dissertations and Theses*, the *MLA Bibliography* includes thousands of author abstracts.

# The 2011 MLA Annual Convention in Los Angeles



The convention brings thousands of people from numerous fields together to explore new avenues of research, discover connections among fields, confer with scholars who share their interests, and renew friendships.

Members organize hundreds of events—workshops, forums, sessions, readings, dinners, and receptions. An exhibit hall features books and other products from more than 130 suppliers, many offering significant discounts. The Job Information Center provides a centralized location for interviews, counseling, and information about employment. The annual Delegate Assembly meeting focuses on a range of issues affecting association governance, policy statements, and professional matters.



The 2011 MLA Convention in Los Angeles, held 6–9 January, will feature a special focus, *The Academy in Hard Times*, as well as the Presidential Forum *Narrating Lives*. Changes to the convention in 2011 include

- new dates—the convention is now held in early January
- more roundtables and workshops
- more collaboration and discussion
- more readings, screenings, and social events and no scholarly sessions in the evenings
- special presentations featuring renowned thinkers, artists, and critics in conversation
- local excursions for registrants
- regular *Twitter* updates during the convention

In addition, there will be approximately 225 division meetings, 64 discussion group meetings, 260 special sessions, 180 allied organization meetings, and dozens of social events.

The 2012 convention will be held in Seattle from 5 to 8 January.



## Books

The MLA publishes books on the teaching of language and literature for students, teachers, and scholars. Best known is the standard writing guide in the humanities, the *MLA Handbook for Writers of Research Papers*. Now in its seventh edition, it is available online ([www.mlahandbook.org](http://www.mlahandbook.org)) and in print. The third edition of the *MLA Style Manual and Guide to Scholarly Publishing* discusses

the preparation of manuscripts, theses, and dissertations. The publications program has also developed several highly praised series, including *Approaches to Teaching World Literature*; *MLA Texts and Translations*; *Options for Teaching*; and *Teaching Languages, Literatures, and Cultures*.

## Other MLA publications include

*Literary Research Guide* (available in electronic format for libraries)

*MLA Job Information List*

*The MLA Guide to the Job Search*





**Applications for 2011 calendar-year memberships will be accepted through 30 June 2011. Members will receive all issues of *PMLA* and the *MLA Newsletter* published in 2011 and *Profession*. Dues are determined by the MLA Delegate Assembly, subject to confirmation by the Executive Council.**

### Membership Categories

**New members** should establish their dues category according to the graduated schedule.

**Graduate students** engaged in courses of study leading to degrees in the fields of modern languages and literatures may **for a maximum of seven years** become student members at a \$20 annual dues rate.

**Joint membership** is open to two individuals sharing the same household. Joint members receive two subscriptions to the *Newsletter*, *Profession*, and the Program issue of *PMLA* and one subscription to all other issues of *PMLA*. To determine the joint-membership dues payment, add \$40 to the dues category of the member with the higher income. (Please attach a separate sheet to your application to provide directory information for the second member.) **This category is not available to student members.**

**Reinstating members** whose memberships have lapsed for one calendar year or more should establish their dues category according to the graduated schedule.

See reverse side for details.

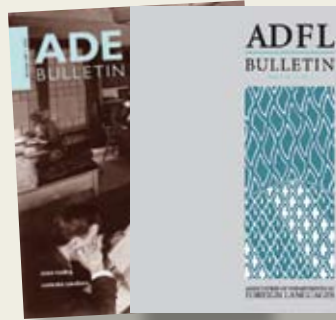
### MLA Language Map

Available at [www.mla.org](http://www.mla.org), the MLA Language Map uses data from the 2000 United States Census to display the locations and numbers of speakers of thirty languages spoken at home in the United States.



A new feature of the MLA Language Map will use data from the fall 2009 enrollment survey to show where languages are taught in relation to where they are spoken. The MLA Language Map's Data Center uses data

from the 2000 United States Census and the 2005 American Community Survey to show the locations, ages, and English ability of speakers of more than three hundred additional languages. The MLA Language Map is intended for use by students, teachers, researchers, and anyone interested in the linguistic and cultural composition of the United States and in the geographic distribution of language programs in United States colleges and universities.



### ADE & ADFL Bulletins

Noted for surveys and coverage of professional and pedagogical issues affecting language and literature departments, the ADE and ADFL bulletins feature essays on undergraduate and graduate curricula, approaches to teaching, and faculty development. Published by the Association of Departments of

English, the *ADE Bulletin* also features articles on current issues such as assessment and public policy. The *ADFL Bulletin*, published by the Association of Departments of Foreign Languages, includes essays on institutional and governmental policies concerning language study and on international studies and other related disciplines. Both journals and their complete archives are now published exclusively online.

### MLA Divisions and Discussion Groups

The membership of the association is organized into divisions, each representing a major area of scholarly and professional concern, and discussion groups, which accommodate the scholarly and professional interests of constituencies within the association concerned with discrete literatures or with literary and linguistic concerns that are not encompassed by one of the divisions. Divisions and discussion groups provide a focus for the association's scholarly activities and organize sessions at the MLA convention. To participate fully in association activities, members should join the division(s) and discussion group(s) that represent their major scholarly or professional interests. Membership in one division or discussion group does not exclude a member from attending any or all meetings arranged by other divisions or discussion groups at a convention or from participating in special sessions.

### Tax Deductibility

In compliance with the United States Internal Revenue Code, the amount of dues paid in excess of \$66 is tax deductible as a charitable contribution.

To comply with postal regulations governing second-class mail, the MLA calculates the cost of a *Newsletter* subscription at \$8.00, which is included in membership dues.



# MLA Divisions

---

## American Literature

- D017 American Literature to 1800
- D018 19th-Century American Literature
- D019 Late-19th- and Early-20th-Century American Literature
- D020 20th-Century American Literature
- D076 Black American Literature and Culture
- D080 American Indian Literatures
- D082 Asian American Literature
- D084 Chicana and Chicano Literature

## Comparative Studies

- D001 Comparative Studies in Medieval Literature
- D002 Comparative Studies in Renaissance and Baroque Literature
- D003 Comparative Studies in Romanticism and the 19th Century
- D004 Comparative Studies in 20th-Century Literature
- D005 Comparative Studies in 18th-Century Literature
- D034 European Literary Relations (including translation)

## English Literature

- D021 Old English Language and Literature
- D022 Middle English Language and Literature, Excluding Chaucer
- D023 Chaucer
- D024 Literature of the English Renaissance, Excluding Shakespeare
- D025 Shakespeare
- D026 17th-Century English Literature
- D027 Restoration and Early-18th-Century English Literature
- D028 Late-18th-Century English Literature
- D029 The English Romantic Period
- D030 The Victorian Period
- D031 Late-19th- and Early-20th-Century English Literature
- D032 20th-Century English Literature
- D033 English Literature Other Than British and American

## French Literature

- D051 French Medieval Language and Literature
- D052 16th-Century French Literature
- D053 17th-Century French Literature
- D054 18th-Century French Literature
- D055 19th-Century French Literature

- D056 20th-Century French Literature
- D057 Francophone Literatures and Cultures

## Genre Studies

- D008 Drama (history, criticism, & theory)
- D009 Film (history, criticism, & theory)
- D010 Nonfiction Prose Studies, Excluding Biography and Autobiography (history, criticism, & theory)
- D011 Poetry (history, criticism, & theory)
- D012 Prose Fiction (history, criticism, & theory)
- D014 Literary Criticism (history of criticism; theory of literature)
- D046 Methods of Literary Research
- D077 Autobiography, Biography, and Life Writing

## German Literature

- D058 German Literature to 1700
- D059 18th- and Early-19th-Century German Literature
- D060 19th- and Early-20th-Century German Literature
- D061 20th-Century German Literature

## Hispanic Literatures

- D078 Colonial Latin American Literatures
- D064 Latin American Literature from Independence to 1900
- D065 20th-Century Latin American Literature
- D067 Medieval Hispanic Languages, Literatures, and Cultures
- D068 16th- and 17th-Century Spanish Poetry and Prose
- D069 18th- and 19th-Century Spanish Literature
- D070 20th-Century Spanish Literature
- D071 16th- and 17th-Century Spanish Drama
- D073 Luso-Brazilian Language and Literature

## Interdisciplinary Approaches

- D006 Women's Studies in Language and Literature
- D007 Ethnic Studies in Language and Literature
- D013 Popular Culture
- D035 Anthropological Approaches to Literature (including myth, folklore, & ritual)
- D036 Linguistic Approaches to Literature

- D037 Philosophical Approaches to Literature (including history of ideas)
- D038 Psychological Approaches to Literature
- D039 Literature and Religion
- D040 Sociological Approaches to Literature
- D041 Literature and Other Arts
- D072 Literature and Science
- D074 Children's Literature
- D075 Gay Studies in Language and Literature
- D085 Disability Studies
- D086 Postcolonial Studies in Literature and Culture

## Italian Literature

- D062 Medieval and Renaissance Italian Literature
- D063 17th-, 18th-, and 19th-Century Italian Literature
- D079 20th-Century Italian Literature

## Language Studies

- D042 Language and Society
- D043 Language Theory
- D044 Applied Linguistics
- D045 Language Change
- D081 History and Theory of Rhetoric and Composition

## Other Languages & Literatures

- D015 African Literatures
- D087 Arabic Literature and Culture
- D016 East Asian Languages and Literatures to 1900
- D083 East Asian Languages and Literatures after 1900
- D066 Slavic and East European Literatures

## Teaching

- D047 The Teaching of Language
- D048 The Teaching of Literature
- D049 The Teaching of Writing
- D050 Teaching as a Profession

## Discussion Groups

---

- G049 Age Studies
- G001 Anglo-Irish Literature
- G003 Arthurian Literature
- G004 Bibliography and Textual Studies
- G005 Canadian Literature in English
- G006 Catalan Language and Literature
- G007 Celtic Languages and Literatures
- G008 Classical Studies and Modern Literature

- G009 Cognitive Approaches to Literature
- G050 Comics and Graphic Narratives
- G010 Comparative Romance Linguistics
- G011 Computer Studies in Language and Literature
- G031 Cuban and Cuban Diaspora Cultural Production
- G012 Folklore and Literature
- G013 General Linguistics
- G014 Germanic Philology
- G015 Hebrew Literature
- G016 Hungarian Literature
- G017 Interdisciplinary Approaches to Culture and Society
- G018 Italian American Literature
- G019 Jewish American Literature
- G020 Jewish Cultural Studies
- G021 Law as Literature
- G022 Lexicography
- G051 Libraries and Research in Languages and Literatures
- G023 Literature of the United States in Languages Other Than English
- G024 Lusophone Literatures and Cultures outside Portugal and Brazil
- G025 Media and Literature
- G026 Mexican Cultural and Literary Studies
- G027 Netherlandic Language and Literature
- G028 Old Norse Language and Literature
- G029 Opera as a Literary and Dramatic Form
- G030 Part-Time Faculty Members
- G032 Present-Day English Language
- G033 Provençal Language and Literature
- G034 Puerto Rican Literature and Culture
- G035 Romance Literary Relations
- G036 Romanian Studies
- G037 Scandinavian Languages and Literatures
- G038 Science Fiction and Utopian and Fantastic Literature
- G039 Scottish Literature
- G040 Sephardic Studies
- G041 Slavic Literatures and Cultures
- G042 South Asian Languages and Literatures
- G043 Southern Literature
- G044 Translation
- G045 Travel Literature
- G046 The Two-Year College
- G047 West Asian Languages and Literatures
- G048 Yiddish Literature

# 2011 MLA Membership Application

This application is also available online at [www.mla.org](http://www.mla.org). The MLA membership year is from 15 January through 14 January of the subsequent year.

## Membership Categories & Dues

- Graduate Student Member \$20 \_\_\_\_\_  
or
- New or Reinstating Member (check one) \_\_\_\_\_
- Income under \$15,000 \$25
  - Income \$15,000–\$20,000 \$40
  - Income \$20,000–\$30,000 \$50
  - Income \$30,000–\$40,000 \$70
  - Income \$40,000–\$50,000 \$85
  - Income \$50,000–\$60,000 \$100
  - Income \$60,000–\$70,000 \$115
  - Income \$70,000–\$80,000 \$130
  - Income \$80,000–\$100,000 \$145
  - Income \$100,000–\$120,000 \$165
  - Income \$120,000–\$140,000 \$185
  - Income \$140,000–\$160,000 \$205
  - Income \$160,000–\$180,000 \$230
  - Income \$180,000–\$200,000 \$255
  - Income over \$200,000 \$280
- Joint membership (add \$40) \_\_\_\_\_
- List of 2011 MLA Members (\$15) \_\_\_\_\_  
(Note: the members' list is available free to all members online.)
- TOTAL** \$

Check (payable to Modern Language Association) enclosed.  
Please do not send cash.



To avoid delay in processing your application, please be sure to specify in the TOTAL box the amount to be charged to your credit card and to authorize the transaction by signing below.

ACCOUNT NO. \_\_\_\_\_

EXP. DATE \_\_\_\_\_ TELEPHONE NO. \_\_\_\_\_

SIGNATURE \_\_\_\_\_

Non-US applicants: For faster processing, please use Visa, MasterCard, American Express, or Discover. International money orders are also accepted. All figures are in US dollars.

Please mail this form with your remittance to

**Membership Office  
Modern Language Association  
Bowling Green Station  
PO Box 107  
New York, NY 10274-0107**

**YR JOINED**

Do not mark in this box.

## Address & Information

**Gender**  
 Female  Male Year of Birth \_\_\_\_\_

**Check one for use in mailing address:**  
 Mr.  Ms.  Miss  Mrs.  Dr.  Prof.

LAST NAME \_\_\_\_\_

FIRST NAME AND MIDDLE NAME OR INITIAL (Please list your name as you want it to appear in all MLA publications including the Program.) \_\_\_\_\_

### Mailing Address

(Give only if different from institutional address below.)

STREET AND NUMBER \_\_\_\_\_

APT. OR BOX \_\_\_\_\_

CITY \_\_\_\_\_

STATE OR PROVINCE \_\_\_\_\_ ZIP OR POSTAL CODE \_\_\_\_\_ COUNTRY \_\_\_\_\_

### Institutional Address

(for listing in directory of members) Please note: Student applications cannot be processed without complete institutional address.

INSTITUTION \_\_\_\_\_

ACADEMIC RANK AND AREA THAT YOU TEACH OR STUDY \_\_\_\_\_

PRIMARY LANGUAGE(S) THAT YOU TEACH OR STUDY \_\_\_\_\_

OTHER LANGUAGE(S) THAT YOU TEACH OR STUDY \_\_\_\_\_

DEPARTMENT (include street address or box number if mail is to be sent to institution) \_\_\_\_\_

CITY \_\_\_\_\_

STATE OR PROVINCE \_\_\_\_\_ ZIP OR POSTAL CODE \_\_\_\_\_ COUNTRY \_\_\_\_\_

**E-mail address** (Please print address exactly as it should appear.) Will you give the MLA permission to share your e-mail address with members of MLA divisions and discussion groups and allied organizations?  YES  NO

### Discussion Group Registration

In the boxes below, please record the code number(s) of the MLA discussion group(s) you wish to join. A listing of the MLA discussion groups appears on the reverse side.

--	--

### Division Registration

In the boxes below, please record the code number(s) of the MLA division(s) you wish to join. A listing of the MLA divisions appears on the reverse side.

--	--

--	--